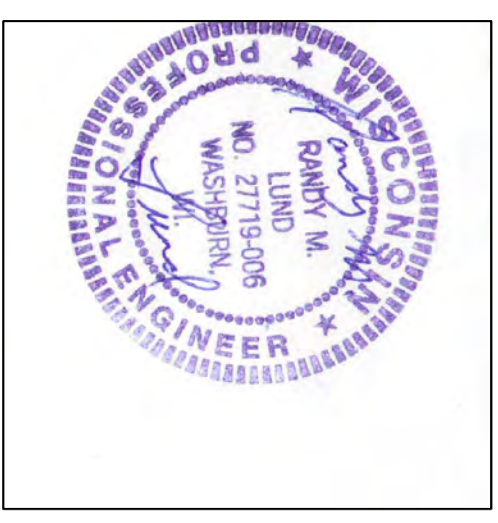


PBSD PSVA
MH PROJECT

BAYFIELD COUNTY
SEC 22, T50N, R04W



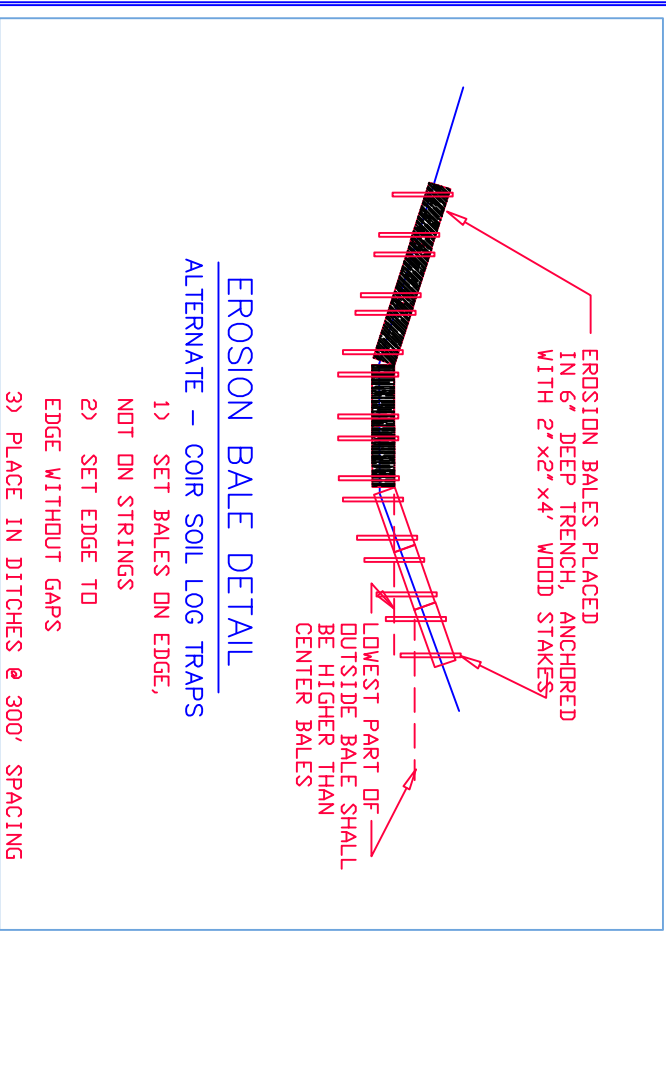
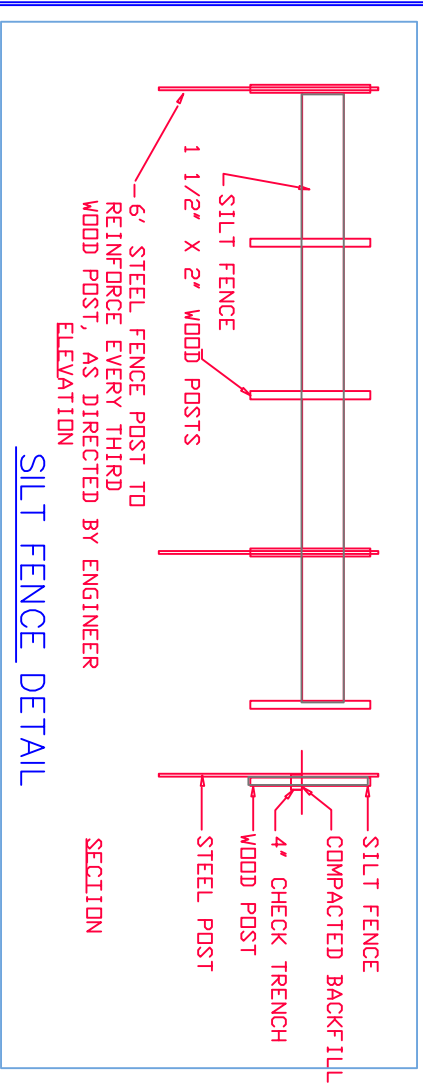
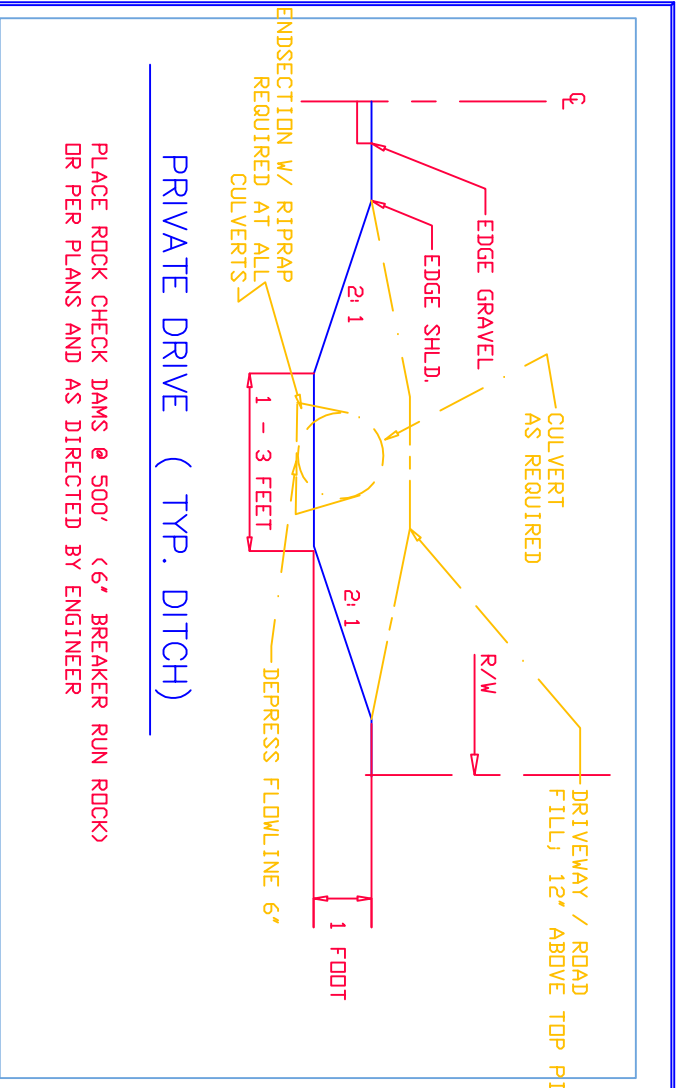
- SHEET INDEX
- 1) TITLE - SHEET 1
 - 2) DETAILS
 - 4) PLAN BASE
 - 5) PLAN PLAT
 - 6) PLAN AIR



RANDY M. LUND, PE

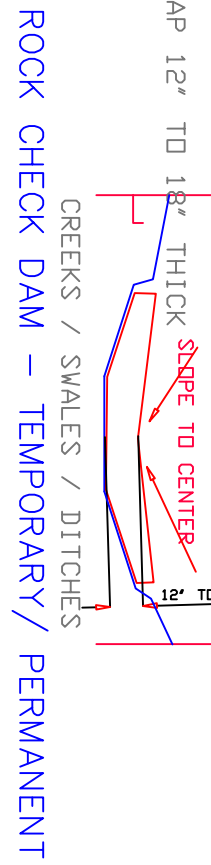
LUND ENGINEERING

PROJ. NO. PBSD	SEP2021	BAYFIELD	PROJECT	PIKES BAY SANITARY DISTRICT PSVA MH PROJECT	LUND ENGINEERING WASHBURN WI 54891	SHEET DESCRIPTION	SHEET NUMBER
DRAWN BY RML	CHECKED BY RML	REVISIONS	TITLE SHEET			1	
DATE 28 FEB 22						PORT SUPERIOR VILLAGE ASSOC.	



GENERAL NOTES

- 1) CONTRACTOR TO VERIFY UTILITIES
- 2) UTILITIES SHOWN MAY NOT BE COMPLETE
- 3) CONTRACTOR TO CALL 'DIGGER'S HOTLINE' PRIOR TO CONSTRUCTION
- 4) ENGINEER TO BE NOTIFIED OF ANY PLAN DISCREPANCIES
- 5) ENGINEER TO BE NOTIFIED OF POTENTIAL CHANGE ORDERS
- 6) ENGINEER TO VERIFY ANY CHANGED CONDITIONS
- 7) DEWATERING BY CONTRACTOR TO MEET STATE LAWS
- 8) SURFACE WATER DIVERSION'S TO COMPLY WITH STATE LAW
- 9) ALL CONSTRUCTION DEBRIS TO BE DISPOSED OF, BY CONTRACTOR
- 10) CONTRACTOR TO NOTIFY ENGINEER, 3 DAYS BEFORE TESTING
- 11) CONTRACTOR TO NOTIFY ENGINEER, 3 DAYS BEFORE STAKING
- 12) ALL SIGNS SHALL BE REMOVED AND REPLACED BY CONTRACTOR
- 13) TRAFFIC CONTROL TO BE PLACED BY CONTRACTOR
- 14) CONTRACTOR TO MAINTAIN USE OF ALL MAIL BOXES
- 15) CONTRACTOR TO MAINTAIN TRAFFIC FLOW
- 16) AT WETLAND CROSSINGS; ALL WETLAND MATERIAL TO BE SALVAGED
- 17) REPLACE WETLAND MATERIAL 18-24" THICK @ UTILITY CROSSINGS, AS REQUIRED
- 18) CONSTRUCTION MUST AVOID USE OF WETLAND AREAS
- 19) ALL EROSION CONTROL TO BE IN PLACE AT START
- 20) CONTRACTOR SHALL USE TRACKING PADS TO LIMIT MUD ON STREETS
- 21) CONTRACTOR TO CONTROL ALL SITE RUNOFF
- 22) CONTRACTOR TO RECORD ALL UNDERGROUND DATA
- 23) CONTRACTOR TO MEET ALL COUNTY REQUIREMENTS
- 24) WI DNR, DSPS, PBS2, DOT, COMPLIANCE AS REQUIRED
- 25) MEET WI DOT STD. SPEC. (HIGHWAY & STRUCT. CONST.)--2019
- 26) MEET STD. SPEC. FOR SEWER & WATER CONST. IN WI-6TH ADDITION
- 27) MINIMUM BURY = 8.0 FEET FOR PVC WATERMAIN / 7' FOR SEWER
- 28) WASHED STONE TRACKING PAD - REQUIRED AT SITE EXITS
- 29) TRACER WIRE 10 GAGE; REQUIRED FOR ALL NON-METALIC PIPE
- 30) ROADS & DRIVES TO BE REPLACED IN KIND / 3' MIN. ASPHALT
- 31) CONTRACTOR TO FOLLOW DNR TECH SPEC'S FOR EROSION CONTROL
- 32) CONTRACTOR TO MARK ALL MH'S & VALVES; WITH 6" STEEL POSTS
- 33) ANY UTILITIES, DAMAGED, MUST BE REPAIRED TO ENGINEER'S SATISFACTION



LEGEND

- EXIST STORM MANHOLE
- PROPOSED STORM MANHOLE
- EXIST INLET
- PROPOSED CATCHBASIN
- UTILITY MANHOLE
- EXIST HYDRANT
- PROPOSED HYDRANT
- EXIST SANITARY MANHOLE
- PROPOSED SANITARY MANHOLE
- LIGHT
- EXIST WATER VALVE
- PROPOSED WATER VALVE
- WATER SERVICE VALVE (EX. / PRO.)
- TEL PEDESTAL
- SURVEY MONUMENT'S
- SOIL BORING
- CONTROL POINT
- BENCHMARK
- IRON PIPE / PIN / ROD
- GAS VALVE
- DECIDUOUS TREE < 6"
- DECIDUOUS TREE > 6"
- EVERGREEN TREE < 6"
- EVERGREEN TREE > 6"
- SHRUB
- UTILITY POLE
- CENTERLINE
- R/L REFERENCE LINE
- EOP EDGE OF PAVEMENT
- DRAINAGE SWALE
- SIGN
- HIGHWAY
- MARSH

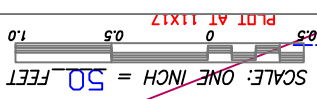
SCALE: PBS2 FEB2022 BAYFIELD PROJECT: PIKES BAY SANITARY DISTRICT
 DRAWN BY: RML CHECKED BY: RML PSVA MH PROJECT
 DATE: 28FEB22 REVISIONS:

LUND ENGINEERING
 715-209-0367 rmlund1@charter.net
 WASHBURN WI 54891

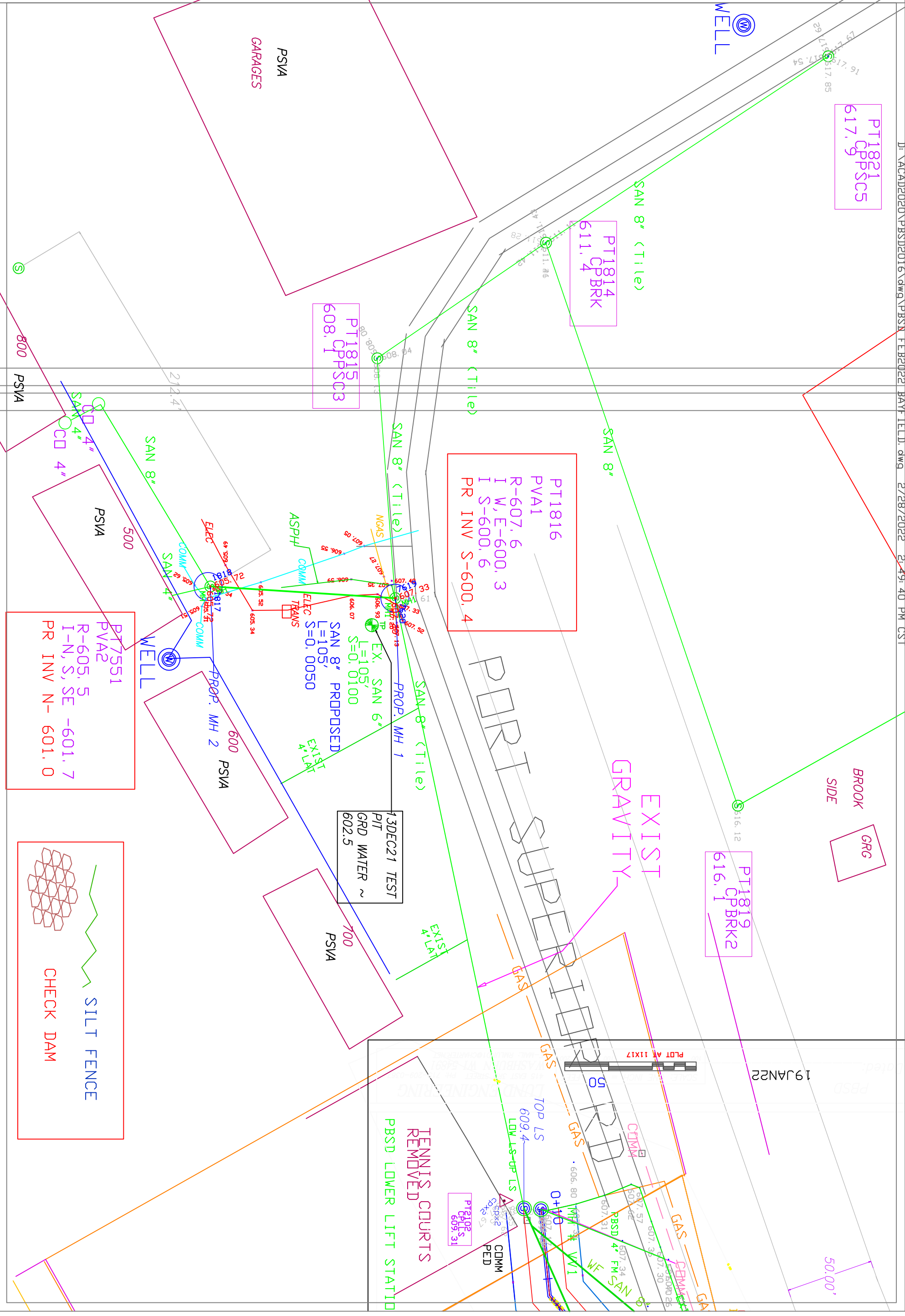
SHEET DESCRIPTION: DETAILS - EROSION CONTROL SHEET NUMBER: S2

PIKES BAY SANITARY DISTRICT #1 PORT SUPERIOR VILLAGE ASSOC. (PSVA)

Project: **PBSD PSVA MH PROJECT**
Date: **28 FEB 22**



LUND ENGINEERING
415 EAST 3RD STREET PH. 715-209-0367
E-MAIL: RMLUND1@CHARTER.NET
WASHBURN WI 54891



PT1821
CPBSC5
617.9

PT1814
CPBRK
611.4

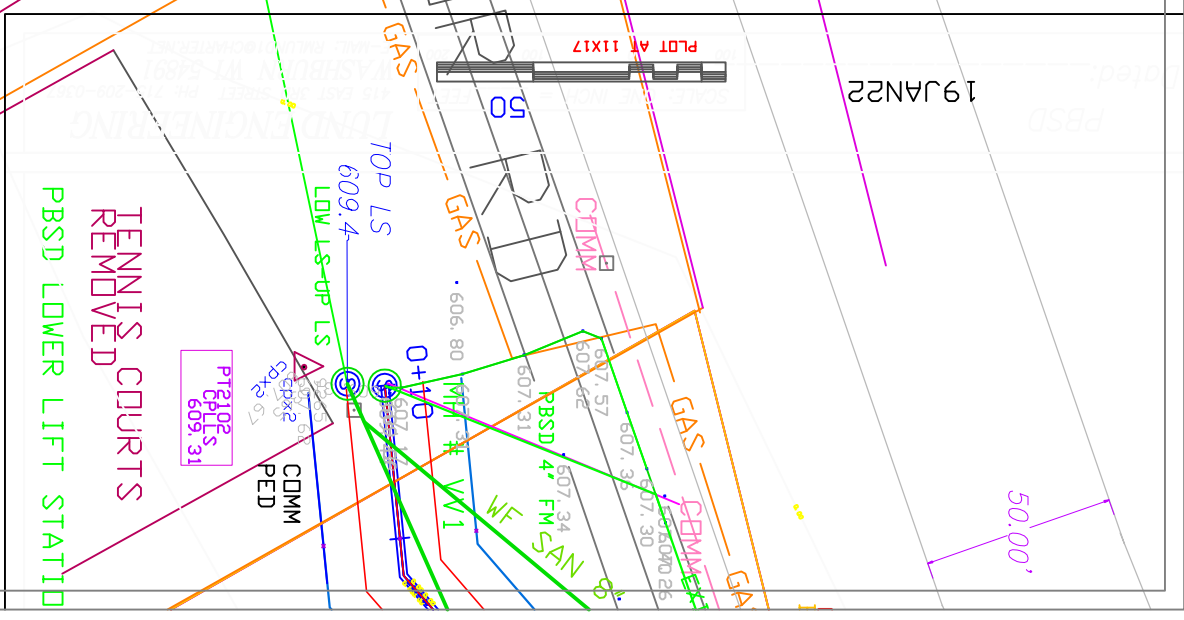
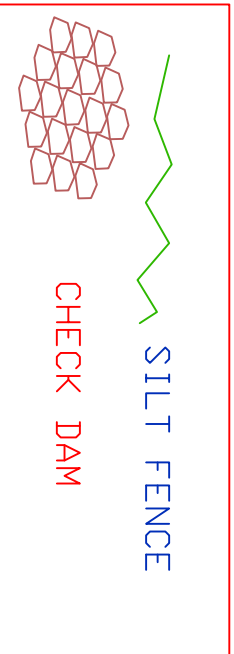
PT1815
CPPSC3
608.1

PT1816
PVA1
R-607.6
I W, E-600.3
I S-600.6
PR INV S-600.4

PT1819
CPBRK2
616.1

PT17551
PVA2
R-605.5
I-N,S, SE -601.7
PR INV N- 601.0

13DEC21 TEST
PIT
GRD WATER ~
602.5



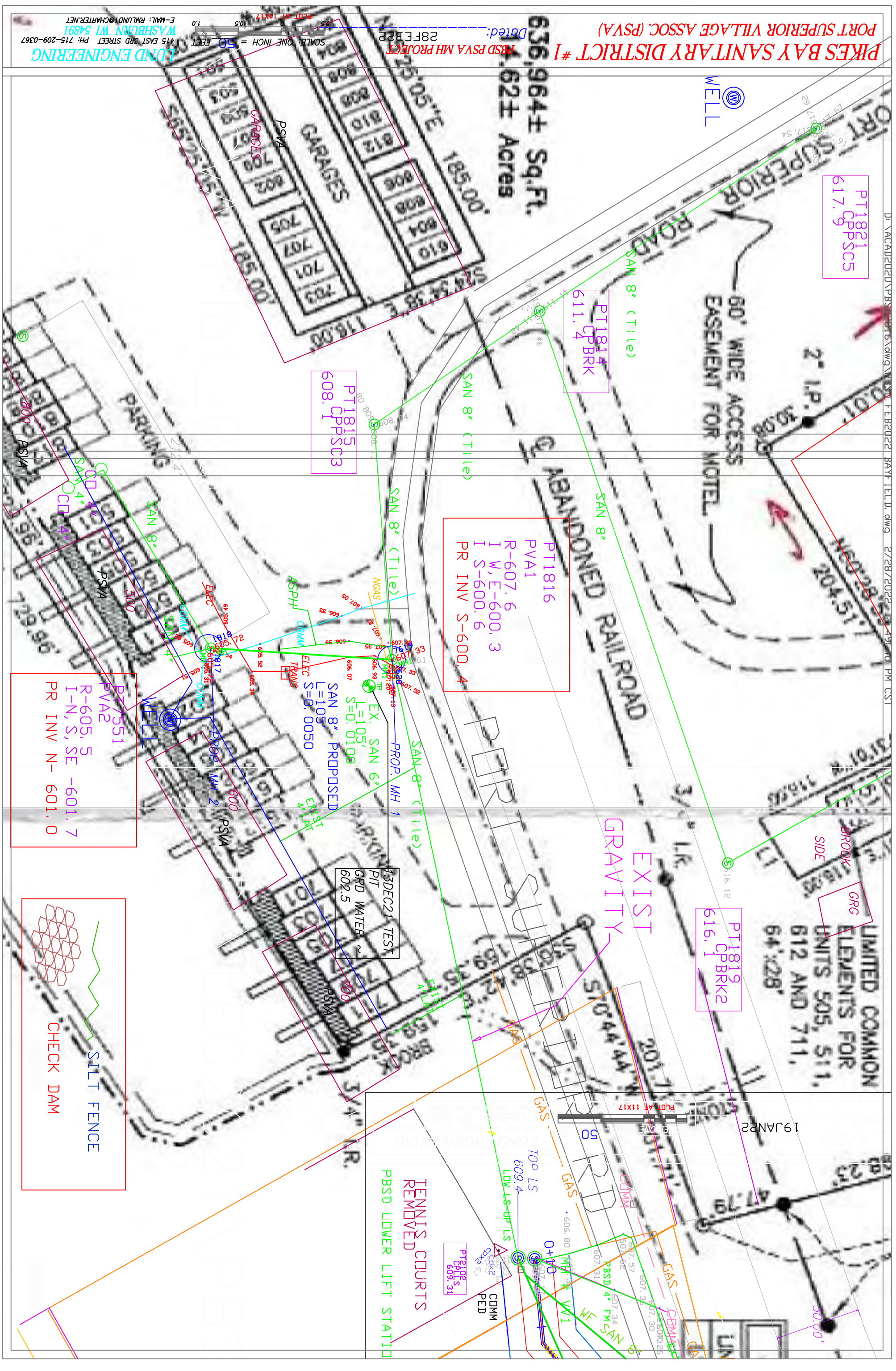
PIKES BAY SANITARY DISTRICT #1 RBSD PSVA MH PROJECT

Dated: 28 FEB 2022

LUND ENGINEERING
415 EAST 3RD STREET PH. 715-209-0367
WASHBURN WI 54891
E-MAIL: RMLUND1@CHARTER.NET

SCALE: ONE INCH = 50 FEET
PLOT AT 11X17

636,964± Sq.Ft.
1.62± Acres



PT1821
CPBSC5
617.9

PT1814
CPBRK
611.4

PT1815
CPPSC3
608.1

PT1816
PVA1
R-607.6
I W, E-600.3
I S-600.6
PR INV S-600.4

PT7551
PVA2
R-605.5
I-N, S, SE -601.7
PR INV N- 601.0

GRC
BROOK
SIDE

PT1819
CPBRK2
616.1

33DEC21 TEST
PIT
GRD WATER ~
602.5

SILT FENCE
CHECK DAM

TENNIS COURTS
REMOVED
PBSD LOWER LIFT STATION



Section 22

PIKES BAY SANTARY DISTRICT #1
PORT SUPERIOR VILLAGE ASSOC. (PSVA)

PSVA PSVA MH PROJECT
28 FEB 22
Dated:

LUND ENGINEERING
415 EAST 3RD STREET PH. 715-209-0367
WASHBURN WI 54891
E-MAIL: RMLUND1@CHARTRNET

SCALE: ONE INCH = 50 FEET
PLT AT 11X17



PT1821
617.9
CPBSC5

PT1814
611.4
CPBRK

PT1815
608.0
CPBSC3

PT1816
PVA1
R-607.6
I W, E-600.3
I S-600.6
PR INV S-600.4

PT1819
616.1
CPBRK2

PT17551
PVA2
R-605.5
I-N, S, SE -601.7
PR INV N- 601.0

LUND ENGINEERING
415 EAST 3RD STREET PH. 715-209-0367
WASHBURN WI 54891
E-MAIL: RMLUND1@CHARTRNET

PBSD
19 JAN 22
Dated:

SCALE: ONE INCH = 50 FEET
PLT AT 11X17

TENNIS COURTS
REMOVED
PBSD LOWER LIFT STATION